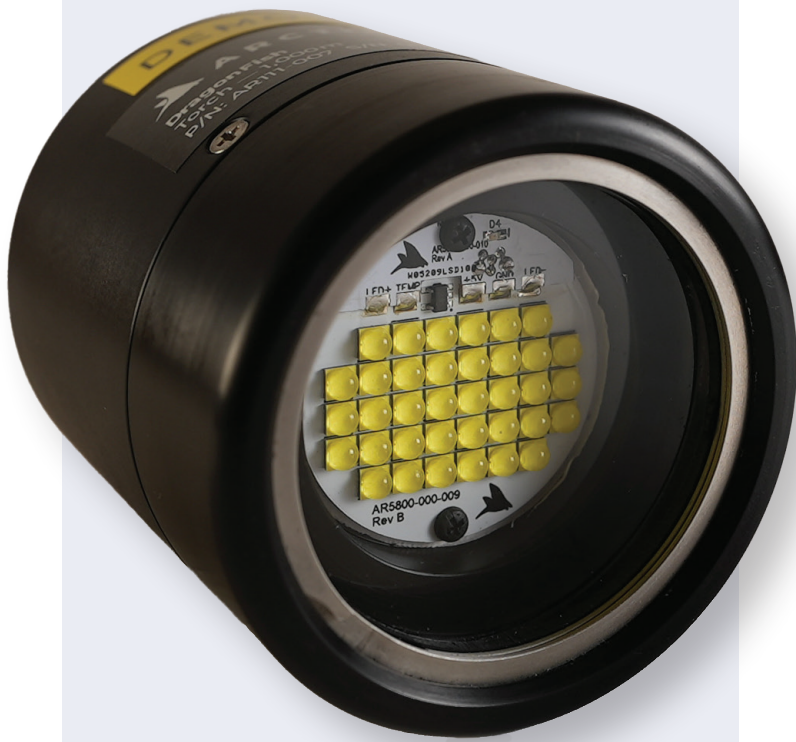


DragonFish Torch

LIGHTING
SERIES



Compact, ultra-bright LED light

Features

- ▶ High-output, 10,000-lumen, continuous, dimmable torch light for professional HOV/ROV/AUV imaging applications
- ▶ Extremely compact package with integral driver electronics
- ▶ 1,000-m- or 6,000-m-rated versions
- ▶ 24VDC supply standard; high-voltage DC and AC options available
- ▶ Multidrop RS232, RS485 (up to 254 soft addresses) or analog dimming control
- ▶ User-settable PWM dimming frequency allows flicker-free operation for various video frame rates
- ▶ Automatic thermal self-protection
- ▶ Durable, hard-anodized 6061 aluminum housing
- ▶ Various white temperatures and monochrome color options
- ▶ Straight or low-profile connector option

Technical specifications on reverse.

Arctic Rays specializes in deep-sea lighting and imaging systems and other custom solutions specifically for use on AUVs, ROVs, manned submersibles and other offshore and underwater structures.

Think deep.

arcticrays.com • 1.321.610.4635



ARCTIC RAYS
SUBSEA TECHNOLOGIES

DragonFish Torch

Technical Specifications

PARAMETER	SPECIFICATION
Model Number	AR 111
OPTICAL	
Operating Mode	Continuous torch; dimmable
Color channels	One
Output	10,000 Lm @ 5,700K
Color Temperature	4,000K 5,700K standard 6,500K deep blue 450 nm blue 470 nm green 525 nm far red 730 nm
Color Rendering Index	70 min. standard; optional 80 min., 90 min.
Beam Angle (FWHM)	100° standard; 65° optional
ELECTRICAL	
Voltage	12–38 VDC standard; other voltage ranges optional
Power	100 W max
Max Input Current	4.2 A @ 24V
Dimming Method	Pulse width modulation; 0–100% duty cycle in 1% increments
PWM Frequency	44 kHz
Efficacy	100 Lm/W
INTERFACE	
Connector	Subconn MCBH4M
Control	Multidrop RS232 or RS485 (2-wire) serial; 254 soft addresses
MECHANICAL	
Weight	1,000 m: 600 g in air; 318 g in seawater 6,000 m: 700 g in air; 420 g in seawater
Materials	6061-T6 aluminum housing (AHC black); acrylic (1,000 m) or sapphire (6,000 m) window
ENVIRONMENTAL	
Depth Rating	1,000 m (3,300 ft) or 6,000 m (19,700 ft)
Temperatures	-10°C to 40°C operating; -25°C to 85°C storage

